

Human Siglec-3/CD33 Protein

Cat. No. CD3-HM433

Description

| | |
|-------------------------|---|
| Source | Recombinant Human Siglec-3/CD33 Protein is expressed from HEK293 with His tag and Avi tag at the C-Terminus. It contains Asp18-His259. |
| Accession | P20138-1 |
| Molecular Weight | The protein has a predicted MW of 29.6 kDa. Due to glycosylation, the protein migrates to 52-60 kDa based on Tris-Bis PAGE result. |
| Endotoxin | Less than 1EU per µg by the LAL method. |
| Purity | > 95% as determined by Tris-Bis PAGE > 95% as determined by HPLC |

Formulation and Storage

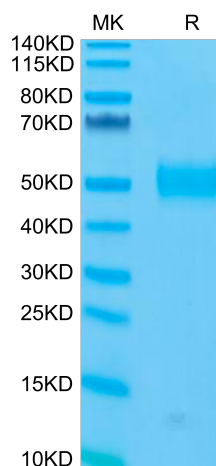
| | |
|-----------------------|--|
| Formulation | Lyophilized from 0.22 µm filtered solution in 20mM MES, 500mM NaCl, 200mM L-Arginine (pH 5.0). Normally 8% mannitol is added as protectant before lyophilization. |
| Reconstitution | Centrifuge the tube before opening. Reconstituting to a concentration more than 100 µg/ml is recommended. Dissolve the lyophilized protein in 20mM MES, 500mM NaCl, 200mM L-Arginine (pH 5.0). |
| Storage | -20 to -80°C for 12 months as supplied from date of receipt. -80°C for 3-6 months after reconstitution. 2-8°C for 2-7 days after reconstitution. Recommend to aliquot the protein into smaller quantities for optimal storage. Please minimize freeze-thaw cycles. |

Background

Sialic-acid-binding immunoglobulin-like lectin (Siglec) that plays a role in mediating cell-cell interactions and in maintaining immune cells in a resting state. They are sialoadhesin/CD169/Siglec-1, CD22/Siglec-2, CD33/Siglec-3, Myelin-Associated Glycoprotein (MAG/Siglec-4a) and Siglecs 5 to 11. To date, no Siglec has been shown to recognized any cell surface ligand other than sialic acids, suggesting that interactions with glycans containing this carbohydrate are important in mediating the biological functions of Siglecs.

Assay Data

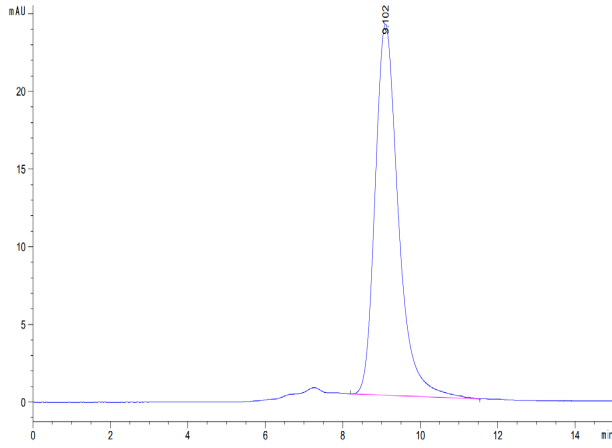
Tris-Bis PAGE



Human Siglec-3 on Tris-Bis PAGE under reduced condition. The purity is greater than 95%.

SEC-HPLC

Assay Data



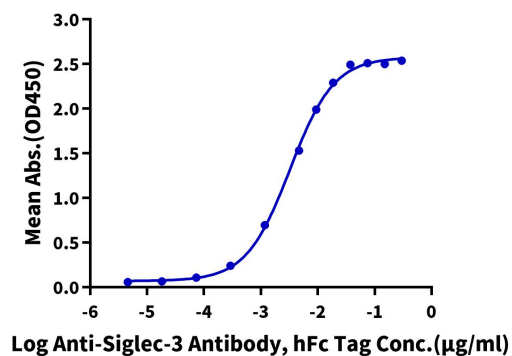
The purity of Human Siglec-3 is greater than 95% as determined by SEC-HPLC.

Assay Data

ELISA Data

Human Siglec-3, His Tag ELISA

0.1µg Human Siglec-3, His Tag Per Well



Immobilized Human Siglec-3, His Tag at 1µg/ml (100µl/Well) on the plate. Dose response curve for Anti-Siglec-3 Antibody, hFc Tag with the EC50 of 3.4ng/ml determined by ELISA.